

I-35 RECONSTRUCTION – NORMAN



Objectives

- ▣ Corridor Overview/History
- ▣ SH-9E/Lindsey St. SPUI Project Overview
- ▣ Benefits/Improvements
- ▣ Challenges
- ▣ Aesthetics
- ▣ Future Projects

Corridor Overview / History

- ▣ I-35 Six Lanes
- ▣ >70,000 ADT
- ▣ Dedicated On/Off Ramps
- ▣ New Bridges/Overpasses
- ▣ MSE Walls & Sound Walls
- ▣ Pedestrian Improvements
- ▣ Lighting
- ▣ Construction Began in 2009

SH-9E/Lindsey St. SPUI Project Overview

- ▣ 6 Lanes of I-35
- ▣ SH-9E/24th Ave. SW Intersection
- ▣ SH-9E/I-35 Interchange
- ▣ SH-9E/Ed Noble Pky. Connection
- ▣ Lindsey St./I-35 Interchange

SH-9E/24th Ave. SW Intersection

Benefits/Improvements



SH-9E/I-35 Interchange

Benefits/Improvements



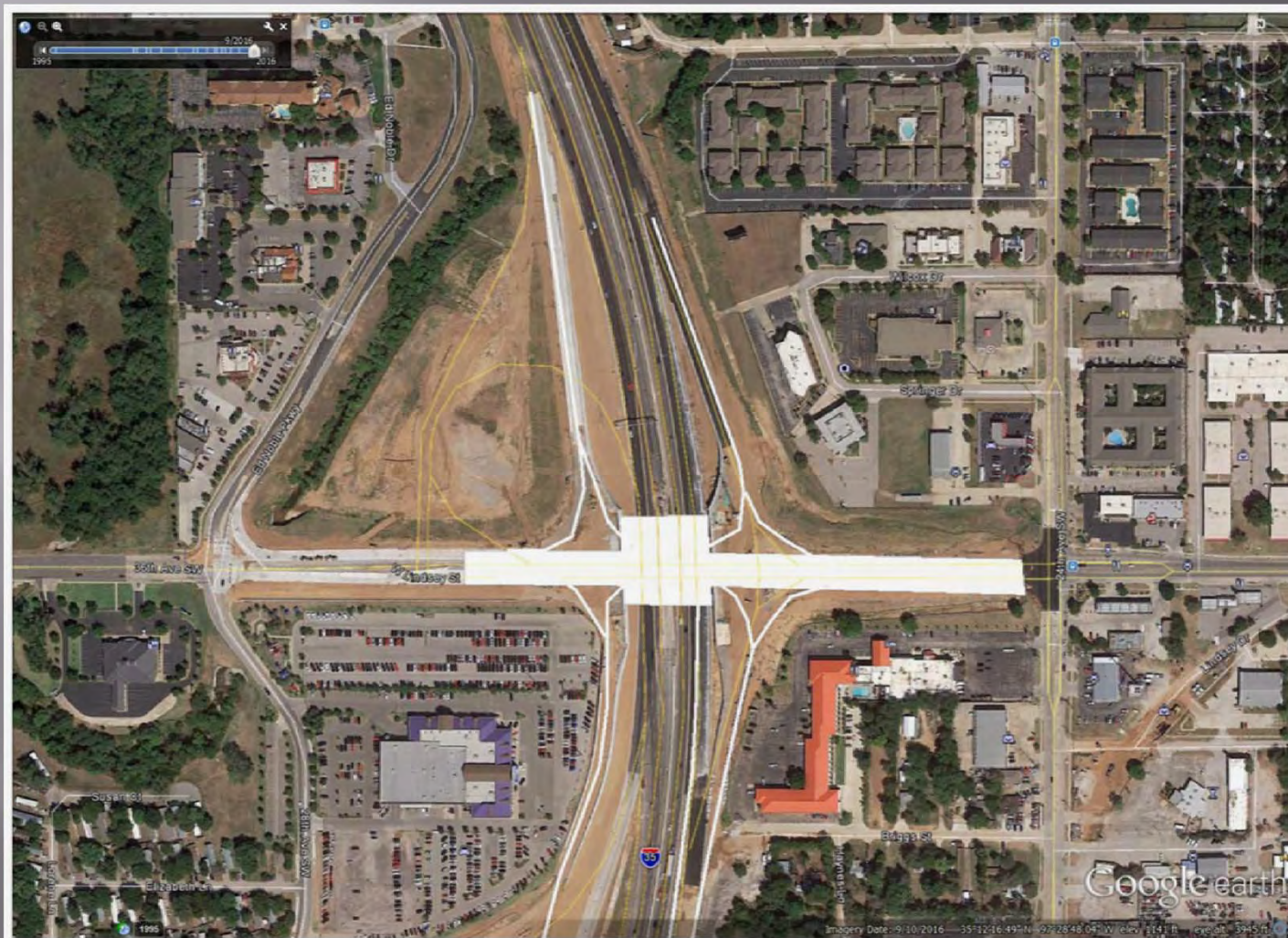
SH-9E/Ed Noble Pky. Connection

Benefits/Improvements



Lindsey St./I-35 Interchange

Benefits/Improvements



Challenges

- ▣ Construction Sequence/Phasing
- ▣ Temporary Drainage/Flooding

Aesthetics



Aesthetics



Aesthetics



Future Projects

- ▣ I-35 under SH-9W

Questions?

